

Welcome to the AccessibilityOnline Webinar Series



A collaborative program between the
ADA National Network and the
U.S. Access Board



The Session is Scheduled to begin at 2:30pm Eastern Time
We will be testing sound quality periodically

Audio and Visual are provided through the on-line webinar system. This session is closed captioned. Individuals may also listen via telephone by dialing 1-712-432-3100 code 930098 (This is **not** a Toll Free number)

The content and materials of this training are property of the US Access Board and the Great Lakes ADA Center and cannot be used and/or distributed without permission. This program is funded through a contract agreement with the U.S. Access Board. For permission to use training content or obtain copies of materials used as part of this program please contact us by email at adata@adagreatlakes.org or toll free (877)232-1990 (V/TTY)

www.AccessibilityOnline.org

1



Listening to the Webinar



- ▶ The audio for today's webinar is being broadcast through your computer. Please make sure your speakers are turned on or your headphones are plugged in.
- ▶ You can control the audio broadcast via the Audio & Video panel. You can adjust the sound by "sliding" the sound bar left or right.
- ▶ If you are having sound quality problems check your audio controls by going through the Audio Wizard which is accessed by selecting the microphone icon on the Audio & Video panel



2



Listening to the Webinar, *continued*



If you do not have
sound capabilities on
your computer or
prefer to listen by
phone, dial:

1-712-432-3100

Pass Code:
930098

This is **not** a Toll Free number

3

Listening to the Webinar, *continued*



MOBILE Users (iPhone, iPad, or Android device and Kindle Fire HD)

Individuals may listen** to the session using the Blackboard Collaborate Mobile App (Available Free from the Apple Store, Google Play or Amazon)




**Closed Captioning is not visible via the Mobile App and limited accessibility for screen reader/Voiceover users

4

Captioning



- ▶ Real-time captioning is provided during this webinar.
- ▶ The caption screen can be accessed by choosing the  icon in the Audio & Video panel. ↓
- ▶ Once selected you will have the option to resize the captioning window, change the font size and save the transcript.



5

Submitting Questions



- ▶ You may type and submit questions in the Chat Area Text Box or press Control-M and enter text in the Chat Area
- ▶ If you are connected via a mobile device you may submit questions in the chat area within the App
- ▶ If you are listening by phone and not logged in to the webinar, you may ask questions by emailing them to webinars@accessibilityonline.org



Please note: This webinar is being recorded and can be accessed on the AccessibilityOnline website at www.accessibilityonline.org/Archives within 24 hours after the conclusion of the session.

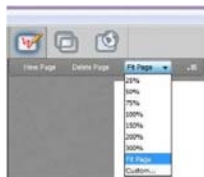
6



Customize Your View



- ▶ Resize the Whiteboard where the Presentation slides are shown to make it smaller or larger by choosing from the drop down menu located above and to the left of the whiteboard. The default is “fit page”




7



Customize Your View *continued*



- ▶ Resize/Reposition the Chat, Participant and Audio & Video panels by “detaching” and using your mouse to reposition or “stretch/shrink”. Each panel may be detached using the  icon in the upper right corner of each panel.

8



Technical Assistance



- ▶ If you experience any technical difficulties during the webinar:
 1. Send a private chat message to the host by double clicking “Great Lakes ADA” in the participant list. A tab titled “Great Lakes ADA” will appear in the chat panel. Type your comment in the text box and “enter” (Keyboard - F6, Arrow up or down to locate “Great Lakes ADA” and select to send a message); or
 2. Email webinars@accessibilityonline.org ; or
 3. Call 877-232-1990 (V/TTY)

9

Open Question and Answer Session

10

Presenters



Melissa Anderson



Tim Creagan



Marsha Mazz



Rex Pace

11

Session Agenda

- Response to previously submitted questions
- Open Q & A

12

Topics

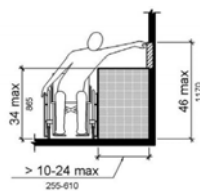
- Operable parts
- Accessible routes
- Doors
- Plumbing elements
- Visual Alarms
- Signage
- ATM's
- Kitchens
- Public Rights of Way and Shared Use Paths
- Other/DOJ
- Section 508

13

Operable parts

14

308.3.2 Obstructed High Side Reach



Outlets Over Countertops

15

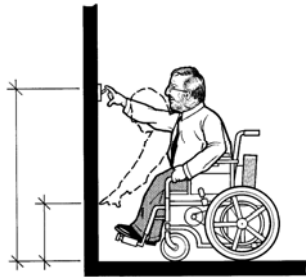
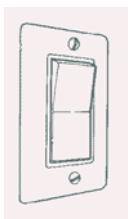
308.3.2 Obstructed High Side Reach



Outlets Over Countertops

16

Reach Ranges (308 & 309.3)



top of control must be WITHIN reach range

17

Operability

Recommended:

- buttons - raised/flush (not recessed)
- no simultaneous action/ movement
- hand or finger dexterity not required



Not required to comply: non-fixed portions
(e.g., keys, access cards)



18

Accessible Routes

19

Site entry points and transit stops



20

Connecting Accessible Routes



21

Parking



22

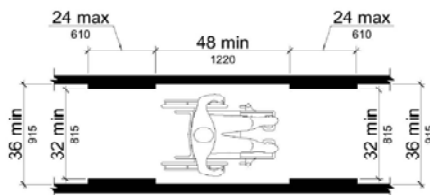
Vehicular Only Routes Example: Self-Storage

Exceptions to 2062.1 and 206.2.2 provide that accessible routes are not required if the only means of access between:

- site arrival points and a building or facility entrance; or
 - accessible elements within a site
- is a vehicular way **not providing** pedestrian access.

23

When Can an Accessible Route be 32" instead of 36"

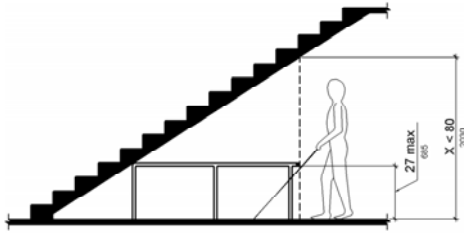


**New: minimum separation (48")
between reduced clear widths**

403

24

Circulation Paths and Accessible Routes

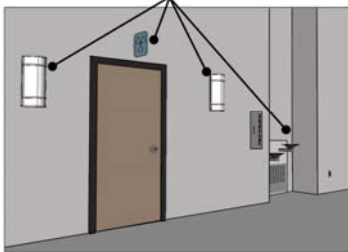


204 & 307

25

Protruding Objects

Examples of protruding objects



Protrusion limits apply to all areas of circulation
– not limited to accessible routes

26

Slip Resistance

A specific coefficient of friction
is not specified



Standard practices for minimizing
slipperiness often suffice

Specify according to likely conditions (e.g.
exposure to moisture)

27

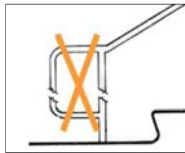
Access Aisles



28

Stairways

Covered: all stairs that are part of means of egress
(exceptions for altered and assembly stairs)



- Removed: level 12" h-rail extension at bottom
- Riser height (4"-7")

210 & 504

29

Doors

30

Doors and Gates

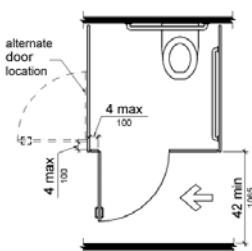
- Spring hinges versus closers
- Door and gate hardware heights
 - Safety latch at a pool
- Opening force requirements for interior and exterior doors

31

Plumbing elements

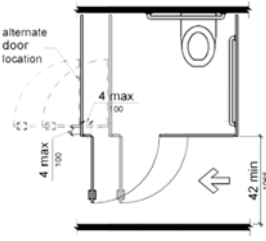
32

Wheelchair Accessible Toilet Compartment: 604.8.1.2 Doors



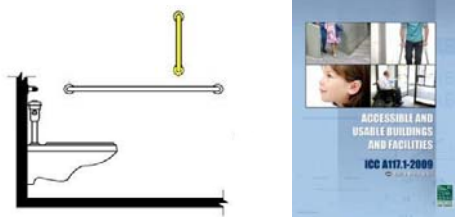
33

Wheelchair Accessible Toilet Compartment: 604.8.1.2 Doors



34

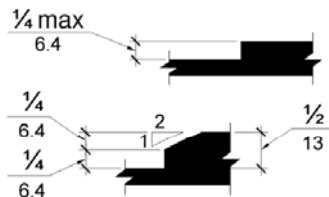
ICC/ANSI Standards - IBC



ANSI A117.1 requires 18" min.
vertical grab bar – 609.3
exception permits location

35

Showers Thresholds (608.7)



Roll-ins – “small” change in level
section 303
Transfer type - 1/2" max, can be vertical

36

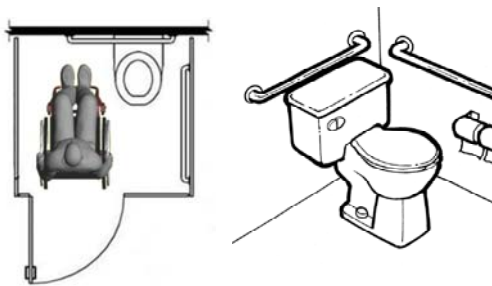
212.3 Sinks



Mop or Service Sink Exception

37

604.6 Flush Controls



dual flush - to open side

38

Visual Alarms and Employee Work Areas

39

Employee Work Area Determining Factors

An employee work area is a space that is:

- used only by employees; and
- used only for work

An employee work area does not include:
common corridors, toilets, break rooms, and
other spaces used only by employees (but not
for work).

40

Public Use, Common Use, Employee Work Area

- Public use – outsiders welcome
- Common use – no outsiders
- Employee work area – don't bother me, I'm working
- A common use space can also be an employee work area e.g., cubicle farm (general public not welcome)
- An individual office can be a public use space e.g., social worker's office (clients present)

41

Employee Work Area



42

Signage

43

Relationship of Height Above Floor, Character Size, and Horizontal Viewing Distance

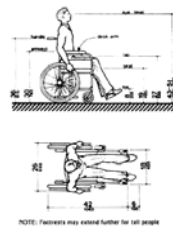


Fig. A2
Dimensions of Adult-Size Wheelchair

Sign Sections 703.5.5 and 703.5.6

44

Relationship of Height Above Floor, Character Size, and Horizontal Viewing Distance

Table 703.5.5 Visual Character Height

Height to Finish Floor or Ground From Baseline of Character	Horizontal Viewing Distance	Minimum Character Height
40 inches (1015 mm) to less than or equal to 70 inches (1780 mm)	less than 72 inches (1830 mm) 72 inches (1830 mm) and greater	5/8 inch (16 mm) 5/8 inch (16 mm), plus 1/8 inch (3.2 mm) per foot (305 mm) of viewing distance above 72 inches (1830 mm)
Greater than 70 inches (1780 mm) to less than or equal to 120 inches (3050 mm)	less than 180 inches (4570 mm) 180 inches (4570 mm) and greater	2 inches (51 mm) 2 inches (51 mm), plus 1/8 inch (3.2 mm) per foot (305 mm) of viewing distance above 180 inches (4570 mm)
greater than 120 inches (3050 mm)	less than 21 feet (6400 mm) 21 feet (6400 mm) and greater	3 inches (75 mm) 3 inches (75 mm), plus 1/8 inch (3.2 mm) per foot (305 mm) of viewing distance above 21 feet (6400 mm)

45

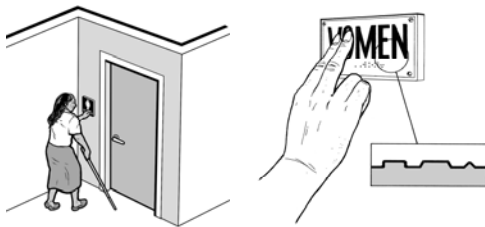
Exterior Directional Signs



Signs that provide direction to or information about interior spaces and facilities must comply (216.3)

46

216.2 Designations - Exterior Signs Identifying Permanent Rooms or Spaces



EXCEPTION: Exterior signs that are not located at the door to the space they serve shall not be required to comply with 703.2 (raised characters and braille).

47

Parking Signs (216.5)



charging stations not considered parking

48

216.3 Directional and Informational Signs

Informational Signs – Examples:

- “Employees Only”
- hours of operation
- Rules of conduct:
 - “Use Stairs in Emergencies”
 - “Visitors must sign in”



49

Transportation Signage

Sections 216 AND 810

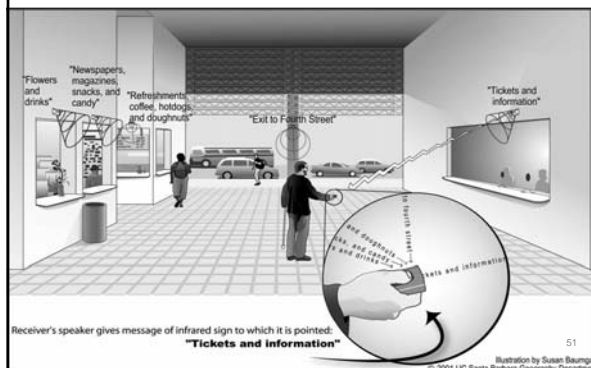
Section 810:

- Bus Signs
 - route identification
- Rail Station Signs –
 - Entrances
 - Routes and Destinations
 - Station names
 - Talking Signs



50

Talking Signs



51

Access Designations



**lockers not required to be identified
as accessible**

52

ATM's

53

Question

- Sections 220 and 707 of the 2010 ADA Standards cover only ATM's and Fare Vending Machines. Does the Board plan to cover other types of integrative transaction machines in the future? If so, what types of machines will be covered?



54

Kitchens

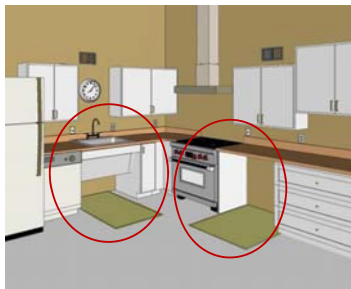
55

“Commercial” Kitchen - employee work area:

“All or any portion of a space used only by employees and used only for work. Corridors, toilet rooms, kitchenettes and break rooms are not employee work areas.” (106.5)

56

Covered Commercial Kitchen



ABA Standards:

- **Work Surfaces (F226)**
- **Sinks (F212)**
- **Operable Parts (F205)**

57

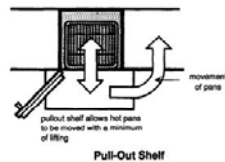
804.3 Kitchen Work Surface



**Pull-out Shelves and
Work Surfaces**

58

804.3 Kitchen Work Surface



**Pull-out Shelves and
Work Surfaces**

59

Public Rights of Way & Shared Use Paths

60

Accessible Route (ADAAG) vs Pedestrian Access Route (PROWAG)



61

Accessible Crossing Example



62

Be Prepared for Right of Way Guidelines

- Review current policies and guidelines.
- Be familiar with the recent DOT and DOJ Technical Assistance regarding curb ramps and street resurfacing.
 - <http://www.ada.gov/doj-fhwa-ta.htm>
 - **Alterations** include new asphalt layers, cape seals, hot in-place recycling, mill and fill, open-graded surface course, etc.
 - **Maintenance** includes chip seals, crack sealing, diamond grinding, surface sealing, pavement patching, spot high-friction treatments, etc.

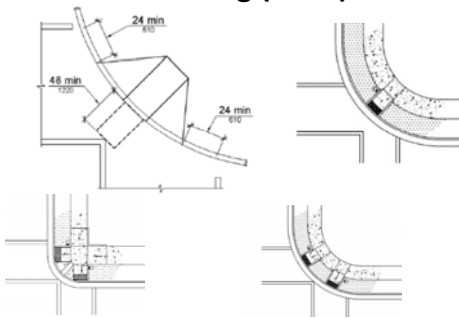
63

Be Prepared

- Staff training on proposed guidelines
- Review the status of the agency's Transition Plan.
 - Do you have one?
 - Is it up to date? Completed?
 - Is progress being made?

64

Pedestrian Access Route to each crossing (R207)



65

R205 Alternate Pedestrian Access Route

- Manual on Uniform Traffic Control Devices (MUTCD), incorporated by reference.
- Pedestrian Access Route - Sections 6D.01, 6D.02, and 6G.05.
- Where provided, pedestrian barricades and channelizing devices - Sections 6F.63, 6F.68, and 6F.71.



66

Other/DOJ

67

DOJ ANPRMS

Comments Closed January 24, 2011

- Accessibility of Web Information and Services Provided by Entities Covered by the ADA
- Movie Captioning and Video Description
- Accessibility of Next Generation 9-1-1
- Equipment and Furniture

Available at:

http://www.ada.gov/newproposed_regs.htm

68

Title II - Undue Financial or Administrative Burden

- See DOJ title II regulations at 28 CFR 35.150 (a)(3)
 - must be made by the head of a public entity or his or her designee
 - considering all resources available to the program, service, or activity
 - including a written statement for the reason for the determination
 - actions that do not qualify must be taken

69

Private Homes

- Title III of the ADA covers public accommodations and commercial facilities (28 CFR 36.104)
- Commercial facilities include facilities that are for non-residential use by a private entity and do not include facilities covered by the Fair Housing Act
- Public accommodations include the following residential facilities:
 - places of lodging (primarily short-term in nature)
 - social service center establishments e.g., homeless shelter
 - places of education

70

Private Golf Course

- A golf course that is not a “private club” is a public accommodation that must comply with title III of the ADA, including, but not limited to:
 - barrier removal
 - reasonable modification of policies, procedures, and practices



71

Barrier Removal and State or Local Building Codes

ADA – Barrier Removal

- No permits issued
- Readily achievable
- Safe harbor for elements in compliance with 1991 ADA Standards
- When not readily achievable, alternatives are permitted
- Path of travel does not apply to barrier removal

Building Code – Alteration

- Permit often require
- Comply with applicable standards, including provisions more stringent than ADA unless
 - waivers or standards modifications are permitted
- Path of travel may be required

72

Playgrounds

Words to watch out for:

- ADA Approved
- ADA Tested
- ADA Certified
- 

Manufacturers of playground equipment are not subject to the ADA



73

Alterations

Technical Infeasibility

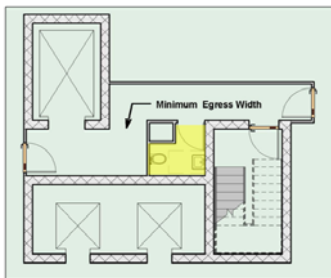
Something is technically infeasible if:

- It would require changes to the structural frame; or
- Existing physical or site constraints prohibit strict compliance

Example: removing fixture to create accessible stall conflicts with plumbing code

74

Alterations



75

Section 508

Section 508

- GPATS: The Access Board and GSA work together to provide training and technical assistance on accessibility. The “refreshed” Section 508 standards will be integrated into GPATS when the new 508 standard is published.
- The government-wide 508 reporting template and instructions for completing it were released July 2013.
- See: www.section508.gov for resources on accessible procurements and instructions on the 508 reporting template.
- Equivalent facilitation is included in the most recent proposed draft of the Section 508 Refresh. [See: <http://www.access-board.gov/guidelines-and-standards/communications-a-it/about-the-ict-refresh>] Most public comments supported it.

Questions?

You may type and submit questions in the Chat Area Text Box or press Control-M and enter text in the Chat Area



U.S. Access Board

(800) 872-2253 (voice)

(800) 993-2822 (TTY)

E-mail: ta@access-board.gov
508@access-board.gov

www.access-board.gov

79

**Thank you for participating
in today's webinar**



Next session:

"Accessible Playground Surfaces"

October 3, 2013

2:30 - 4:00 (ET)

www.accessibilityonline.org
(877) 232-1990 (v/TTY)

80
